



ATHENS-LIMESTONE
CHAMBER of COMMERCE

ANNUAL REPORT



www.alcchamber.org

2023-2024

2023-2024 CHAMBER REVIEW

A note from the Chairwoman of the Board

Dear fellow Chamber Members,

It has been my honor to serve as the 2023-2024 Chairwoman of the Athens-Limestone County Chamber of Commerce's Board of Directors. Thank you for your investment and unwavering support this past year. The Chamber's success in 2023 is a byproduct of its loyal members, and it has been an honor to work on your behalf. Our Chamber is extremely fortunate to have a membership base that understands we all bear the responsibility and privilege of creating economic success and a vibrant quality of life in Athens and Limestone County.

I am proud of the work accomplished in 2023. Your Chamber represents over 570 local businesses and organizations. The Chamber welcomed 83 new members resulting in a host of ribbon cuttings as well as groundbreaking ceremonies. Other events include the Home & Garden Show, Christmas Parade, State of the State with Governor Ivey, State of the City/County, Washington Update, and many others. This is proof positive that Limestone County continues to be the fastest-growing county in Alabama.

The Chamber continues to engage in important dialogue about the future of economic development in our community and emphasizes workforce development to help employers build scalable, sustainable pipelines of talent. The Chamber continues to make an impact on our community and businesses through initiatives such as Women in Business and the Diversity Equity Inclusion Business Alliance. The Chamber continues to offer leadership development programs for both adults and youth, marketing opportunities and business development opportunities.

I would like to express my appreciation to the Chamber's Board of Directors, Chamber Ambassadors, and the various partner organizations. Your dedication to sponsoring and creating events and programs that strengthen community relationships is the backbone of our Chamber.

Last but certainly not least, I want to thank Pammie, Debra, and Brooke for the commitment and hard work they have put in over the past year. Thank you all for sharing your talents with Athens and Limestone County. You make a difference every single day.

Again, I am thankful to have served our community in this role and for the opportunity to have followed the chairpersons before me who played a significant role in the success of our Chamber. The future continues to be bright for Athens and Limestone County.

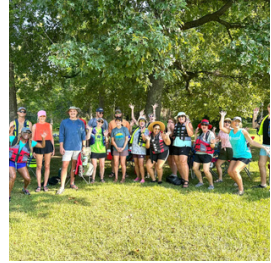
Sincerely,

Stephanie Gerstman

Chairwoman of the Board

Athens-Limestone County Chamber of Commerce

2023-2024 IN REVIEW



2023-2024 Athens-Limestone County Board of Directors

2023-2024 Executive Committee



Stephanie Gerstman
Redstone Federal Credit Union
Chairwoman



Jerome Malone
Splash of Ink Screenprinting
Chairman-elect



William Ming
Ming Commercial Real Estate
Past Chairman

2023-2024 Vice Chairs



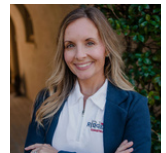
Weston Coleman
T & C Stamping
**Civic & Governmental
Council**



Matthew Jimmerson
Athens Florist & Gifts
**Small Business Development
Council**



Zach Conlon
Zach Conlon Insurance
**Leadership & Networking
Council**



Lauren Marsh
Ridgeline Construction
**Workforce & Education
Council**

2023-2024 Ex-Officio Directors



Collin Daly
Chairman Limestone
County Commission



Adam Fox
Director Pryor Field
Regional Airport



Dr. Jimmy Hodges
President Calhoun
Community College



Ronnie Marks
Mayor of Athens



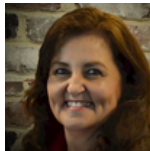
Beth Patton
Superintendent Athens
City Schools



Dr. Randy Shearouse
Superintendent Limestone
County Schools



Bethany Shockney
President Limestone Co.
Economic Development



Teresa Todd
President Athens Limestone
County Tourism Association



Brandon Wallace
Director Athens
Limestone County 911



Dr. Catherine Wehlburg
Interim President Athens
State University

Not pictured:

Tracy Compton
Mayor of Elkmont

Billy Shannon
Mayor of Ardmore

Nikki Sprader
Mayor of Mooresville

Martin Traylor
Redstone Arsenal

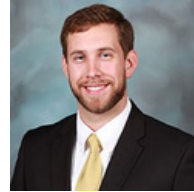
Athens-Limestone County Chamber of Commerce 2023-2024 Board of Directors



Delois Bailey
Limestone Manor



Chris Becker
AL Cooperative Extension System



Barrett Gilbert
Limestone Farmers Federation



Claire Tinney Jones
Claire Tinney Jones, P.C.



Felicia Lambert
Athens Limestone Hospital



Shaundra Landcaster
Whataburger



Dianne McAlister
Synovus Mortgage



Tony McCormack
Progressive Realty



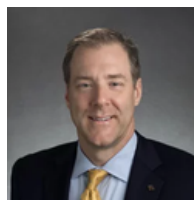
Brian Moore
Martin & Cobey



Randy Moore
Steelcase



Ray Neese
First State Bank



Stephen Norris
Trustmark Bank



Lynn Persell
Persell Lumber & Mill Shop



Jamey Thomas
Mauldin & Jenkins CPAs & Advisors



Revive Cafe
Briana Walter



John Webster
Glassco Benefits Group



Bunni Wheeler
Mazda Toyota

THE TEAM



Pammie Jimmar
Chamber President



Debra Porter
Membership & Operations
Director



Brooke Pettus
Programs & Events Manager



Ana Norwood
Intern/Calhoun Community College



Nikki Ahlf
Marketing and
Communications Coordinator

10 BENEFITS OF MEMBERSHIP

BENEFITS



**NEW
BUSINESS
CONTACTS**



REFERRALS



**COMMUNITY
INFORMATION**



**PROFESSIONAL
DEVELOPMENT**



**COMMUNITY
CONNECTION**



**CIVIC &
GOVERNMENTAL
AFFAIRS**



**NETWORKING
OPPORTUNITIES**



**SOCIAL
MEDIA
EXPOSURE**



**WEEKLY
NEWSLETTERS**



**VALUABLE
RESOURCES**



CHAMBER CHANNELS

43,427

AVERAGE MONTHLY
FACEBOOK POST
REACH

1,015

CHAMBER
NEWSLETTER
SUBSCRIBERS

SOCIAL MEDIA STATS



6,964
Followers



1,008
Followers

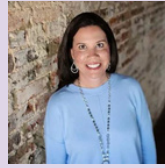


323
Followers

2023-2024 CHAMBER AMBASSADORS

Ambassador Chair

Brooke Burns
First National Bank



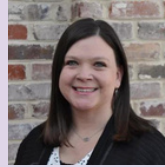
Co-Chair

Kelly Davis
Synovus Mortgage



Secretary

Nancy Groce
Redstone Federal Credit Union



Delois Bailey, Limestone Manor
Shuree Barnes, Alexander Corder & Shelley
Paula Bates, Hospice of North Alabama
Stephanie Brodka, Limestone Lodge
Caroline Canestrari, Athens Limestone Hospital
Foundation
Toyna Carter, First National Bank
Laken Dickson, Pryor Field Regional Airport
Kim Dunnivant, Athens State University
Shannon Elliott, Engel and Volkers
Carina Farr, Ridgeline Construction
Melinda Jones, Athens Limestone Public Library
Kristen Littrell, Athens Limestone Hospital
Foundation
Mitzi McCormack, Progressive Realty

Meghan McLaughlin, Capstone Realty
Lacy Beth McMunn, Hospice of Limestone County
Kyle McQueeny, Alabama Credit Union
Kristen Morell, Asahi Kasei Plastics North America
Lottie Partridge, RE/MAX Legacy
Marybeth Pate, HLC Realty
Joy Patterson, Bank Independent
Zach Powell, Bryant Bank
Sabrina Rouse, Bank Independent
Hannah Scrivner, Limestone County Commission
Emerald Simmons, Athens State University
Glenn Stokes, J.T. Ray Company
April Southers, Dream Key Real Estate
Blake Williams, Limestone Co. Economic Development
Josh Winn, Bryant Bank Mortgage



Civic & Governmental Affairs

The Chamber represents the interest of businesses in Athens and Limestone County and is the unified voice of the business community.

We provide education and awareness on issues affecting local businesses and advocate for our members on a local, regional, state, and federal level. We strive to create a positive business climate by focusing on local issues as they impact the business community.

Weston Coleman

Vice Chair, Civic & Governmental



Events

- Legislative Update
- State of the City
- State of the County
- State of the State
- Washington Update
- Montgomery Drive-In

Over
760
Attendees

Business Development & Networking

Matthew Jimmerson

Vice Chair, Business Development

The Chamber provides programs that promote growth in existing and new businesses in Athens and Limestone County. We support and encourage expanding existing businesses and we support the recruitment of new retail, commercial, industrial, and technology-based businesses. The Chamber supports initiatives that encourage and promote a balanced and quality commercial environment for business and industry.

Limestone County Specific Data



2023 Data

Loans/Equity Capital Infusion	\$360,016
Business Start Ups	7
Jobs Created	13
Hours of Business Advising	162
Clients Served	52

Professional Development



DIVERSITY EQUITY & INCLUSION BUSINESS ALLIANCE OF ATHENS-LIMESTONE CO. CHAMBER OF COMMERCE

The Diversity Equity & Inclusion Business Alliance (DEIBA), an arm of the Athens-Limestone Co. Chamber of Commerce, is a network of minority businesses in the Athens-Limestone community. The goal of this organization is to maximize business knowledge, market share, and create opportunities for the success and growth of minority businesses through **coaching, connecting, & community**.

COACHING
BUILDING YOUR BUSINESS

CONNECTING
BUILDING A STRONG NETWORK

COMMUNITY
BUILDING A BETTER COMMUNITY

BRIDGING THE GAP **STRONGER TOGETHER**

Small Business Week



In conjunction with the national Small Business Week, the Chamber hosts events to support celebrating small businesses in Athens and Limestone County including Shop Small Press Conferences.

Women In Business

The Women In Business offers programs that allow women to be supported and achieve their career and business goals. Empowering women by providing access to programs, thought leadership, networking and mentoring opportunities for professional development and recognition and promotion of role models gives women the opportunity to thrive.



4 Events
Over 100 Attendees

12 Chamber Coffees

Over 575 Attendees

Small Business Awards Celebration

Small businesses are vital to the country's economic health and success. They also are the backbone of our community. The Small Business of the Year Awards honor the exceptional companies/organizations that serve as the economic backbone of our community. We celebrate the ingenuity and achievements of small businesses within our membership. This is a great way to market your company and support your small business peers.



Sporting Clay Tournament



18 Teams

Workforce & Education

Lauren Marsh

Vice Chair, Workforce & Education

The Athens-Limestone Chamber is dedicated to developing a qualified workforce for Limestone County and this begins with education. The Chamber aims to encourage workforce preparedness through collaboration with strategic education partnerships and advocating students workforce awareness at every level of education.

Job Shadowing



State of Education



Partners in Education



2023-2024 Partners in Education

Athens City Schools

iAcademy@Athens Elementary / Family Security Credit Union
Athens High School / First Metro Bank
Athens Intermediate School / Ridgeline Construction
Athens Middle School / Henry G. Griggs Jr. D.M.D., M.S., LLC
FAME Academy@Brookhill / First National Bank/Athens
Spark Academy@Coward / Friendship United Methodist Church
Heart Academy@Julian Newman / Athens-Limestone Hospital
Athens Renaissance School / First United Methodist Church

Limestone County Schools

Ardmore High School / First National Bank/Ardmore
Blue Springs Elementary School / Steelcase
Career Technical Center / Mazda Toyota & Asahi Kasel Plastics
Cedar Hill Elementary / First National Bank/Ardmore
Clements High School / Bank Independent
Creekside Primary / Redstone Federal Credit Union
Creekside Elementary / Redstone Federal Credit Union
East Limestone High School / Hobbs Jewelers
Elkmont Elementary / Lindsay Lane Baptist Church North
Elkmont High School / United Way of Athens and Limestone County
Johnson Elementary / Lowe's
Sugar Creek / Redstone Federal Credit Union
Piney Chapel Elementary / Emmanuel Baptist Church
Tanner Elementary / Rogers Group
Tanner High School / Rogers Group
West Limestone High School / Grayson Carter & Son Contracting, Inc

Private Schools

Athens Bible School / First National Bank
Lindsay Lane Christian Academy / Listerhill Credit Union

Leadership

Zach Conlon
Vice Chair, Leadership & Networking

2023-2024 Limestone LEAD



Ardmore High School

Marissa Gonzales
Kendall Lee

Athens Bible School

Brooke Blakely
Kate Hargrave
Katie Lee Helums
Allie Lovell
Jill Piwowarski

Athens High School

Reece Boyett
Jack Deemer
Micah Henson
Benjamin Hutton
Connor Johnstone
Gabby Keenum
Kaleigh Langford
Blythe Menefee
Savannah Orr
Ivey Lynn Shackleford
Denbree Stockman
Gavin Swint

Athens Renaissance School

Isaac Britnell
Luke Dempsey

Clements High School

Jason Harwell

Lindsay Lane Christian Academy

Eden Awoniyi
Sarah Chapman
Jacob Plitsch
Kara Williams

Tanner High School

Paige Castrejon

West Limestone High School

Jarron Meredith
Maddyson Speisseggar

Westminster Christian Academy

Emma Haynes

2023-2024 Leadership Athens-Limestone



Caroline Canestrari
Athens-Limestone Hospital
Foundation



Susan Clayborn
Athens-Limestone Hospital



Anna Clem
Singing River Trail



Shannon Drake
Leadership Greater Huntsville



Kim Dunnivant
Athens State University
LaunchBox



Nancy Groce
Redstone Federal Credit Union



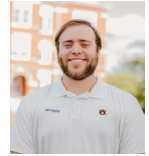
Matthew Herrell
Halliburton Surveying &
Mapping, Inc.



Jimmy Hodges
Calhoun Community College



Matthew Jimmerson
Athens Florist & Gifts



Jacob Johnston
Martin & Cobey Construction Co.



Melinda Jones
Athens Limestone County Public Library



KaDaija Madden
First National Bank



William Mathews Jr.
Mathews Law



Caroline Mathews
Mathews Law



Marion Myers
Hughes Properties, II, LLC



Marybeth Pate
HLC Realty



Suzanne Paysinger
Hospice of Limestone County



Zach Powell
Bryant Bank



Josh Winn
Bryant Bank Mortgage



Josh Wolfe
WolfeCo Media, LLC

Membership

578

Members

100

New Members

Our members benefit from opportunities through networking events to build strong business relationships, earn referrals from other Chamber members, and improve their visibility in the business community. Together we create actions and initiatives that are aimed at promoting business and economic development for the benefit of our community. Chamber membership allows businesses to have a common voice on issues affecting business in Athens-Limestone County.

Top 5 Membership Categories

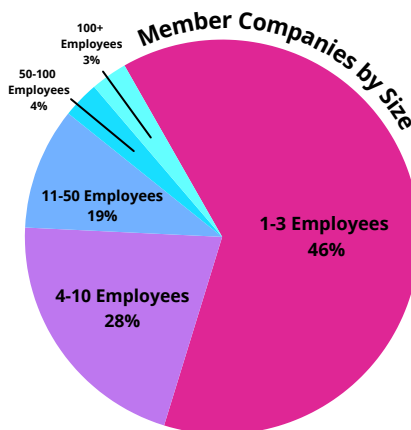
1. Non-Profits
2. Contractors
3. Professional Services
4. Retail
5. Real Estate

49 Ribbon Cuttings & Ground Breakings



Annual Sponsorship Campaign

\$203,000





ATHENS-LIMESTONE
CHAMBER *of* COMMERCE

